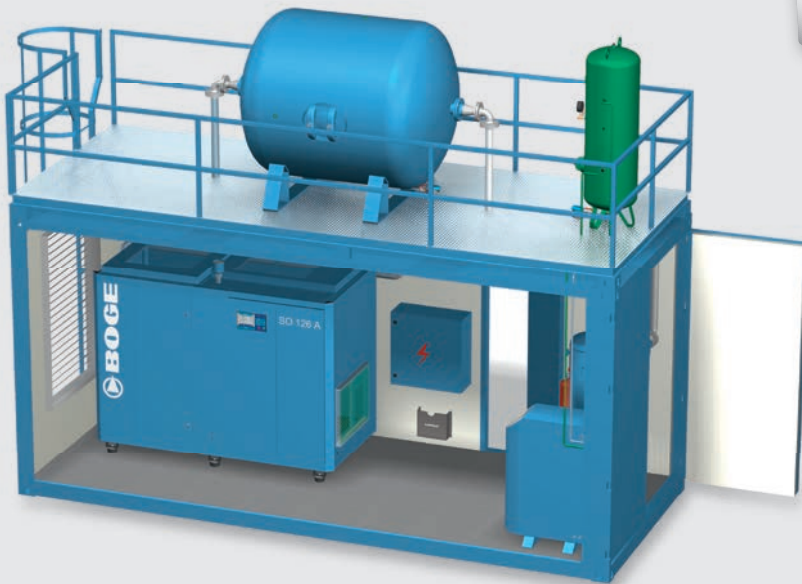


Complete, individual, turnkey: **BOGE Compressed Air and N2 Station**

Compressed air delivery rate 4.15–13.01 m³/min
Max. pressure 10 bar (g)
N2 purity up to 99.999% / 5.0 / 10 ppm
N2 delivery rate 0.4 Nm³/h

**Oil-free compressed air + nitrogen
in a turnkey container solution**



COMPLETELY OIL-FREE

The individually designed BOGE Turnkey System delivers oil-free compressed air up to 10 bar. Where space is limited it can be set up outside industrial halls as a compact container solution.

COMPLETELY VERSATILE

In addition to producing oil-free compressed air, the system offers efficient nitrogen generation in purities between 95% and 99.999%. As the PSA technology requires minimal compressed air, it is a particularly energy-efficient solution.

COMPLETELY EFFICIENT

The screw compressor has an integrated frequency converter, which continually adjusts capacity to demands. Dynamic speed control achieves infinitely variable part-load control.

COMPLETELY INDIVIDUAL

Each BOGE Turnkey System is individually tailored to the needs of the customer. After intensive consultation and analysis we develop a tailored solution for the specifications, produce and install the components and, if required, provide on-going maintenance of the system.

A prime example of efficient compressed air systems: The BOGE Compressed Air and N₂ Station produces oil-free compressed air at 10 bar (g) and high-purity nitrogen in a turnkey all-in-one solution. It is ideal in situations where space is limited and can be tailored to the requirements of specific customers and specific sectors.

AN OVERVIEW OF THE BOGE STATION



CONTAINER 20 FT HQ

- dimensions (H x W x L) 2 880 x 2 438 x 6 058 mm
- intake air regulation
- air intake filter
- thermostatically controlled exhaust air ventilator
- heat from compressor makes it suitable for both summer and winter use
- 2 kW heater
- capacity distribution (system supplied with only one supply line)
- stainless steel pipework
- 60 mm of insulation

PLATFORM WITH LADDER WITH SAFETY CAGE

- dimensions (H x W x L) 1 275 x 2 438 x 6 058 mm + ladder
- galvanised steel

1 SO 126 AF OIL-FREE SCREW COMPRESSOR

- volume flow rate 4.15–13.01 m³/min
- maximum pressure 10 bar(g)
- motor output 90 kW

2 CYCLONE SEPARATOR Z 125 N WITH BEKOMAT

3 DAZ 161-2 COMPRESSED AIR DRYER

- dewpoint –40°C

4 COMPRESSED AIR RECEIVER 11 BAR

- 4 000 l
- horizontal

5 BOGE B PN NITROGEN GENERATOR

- N₂ volume flow rate: 5.7 Nm³/h – 0.4 Nm³/h
- N₂ purity: 95 % to 99.999 %

6 NITROGEN RECEIVER 11 BAR

- 270 l
- vertical

We also design BOGE Container solutions for extreme ambient temperatures (–40 to +45°C) on request. We would be happy to build you a Container System tailored to your individual requirements!